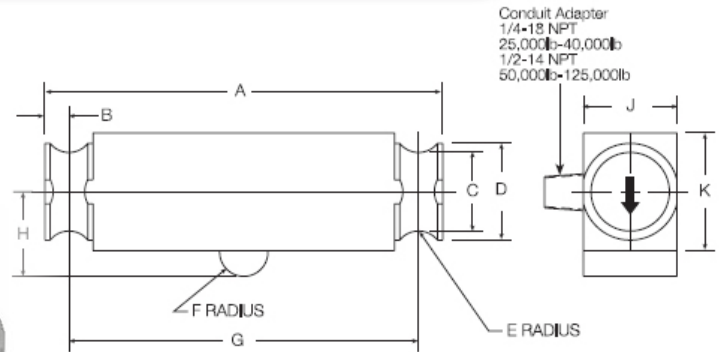


# TW85040

## INTERCHANGEABLE PRODUCTS:

- Sensortronics 65040A
- Rice Lake RL75040
- Artech 80310
- Thurman TSC 840
- Celtron DLB



## DIMENSIONS

Rated Capacity	A	B	C	D	E	F	G	H	J	K
lb/inches										
25,000-50,000 SE	8.25	.50	1.63	2.00	.50	.50	7.25	1.75	1.94	2.44
50,000-75,000	11.50	.75	1.70	2.20	.75	1.00	10.00	2.00	1.94	2.94
kg/mm										
11,339.8-22,679.6 SE	209.6	12.7	41.4	50.8	12.7	12.7	184.2	44.5	49.3	62.0
22,679.6-34,019.4	292.1	19.1	43.2	55.9	19.1	25.4	254.0	50.8	49.3	74.7

## SPECIFICATIONS

Full Scale Output: 3.0mV/V nominal  
 Bridge Resistance: 700 ohms, nominal  
 Temperature: Compensated range  
 14 deg. F to 104 deg. F  
 -10 deg. C to 40 deg. C  
 Safe Overload: 150% Full Scale  
 Rated Excitation: 10V DC (15V maximum)  
 Nonlinearity: 0.03% Full Scale

Insulation Resistance: 5000megohms  
 Cable Length: 35' / 10.5m  
 Cable Coloring: Red...+Excitation  
 Black...-Excitation  
 Green...+Signal  
 White...-Signal  
 Warranty: 1-year limited warranty  
 Hysteresis: 0,02% Full Scale