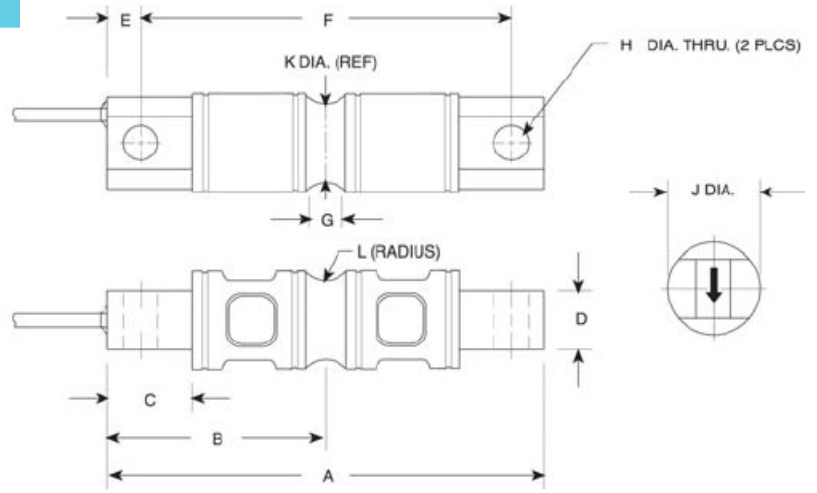


# TW6103

## INTERCHANGEABLE PRODUCTS:

- T/I Revere 5103 (Alloy Steel)
- T/I Revere 9103 (Stainless Steel)



## DIMENSIONS

Rated Capacity	A	B	C	D	E	F	G	H	J	K	L
lb/inches											
5,000-10,000	8.12	4.06	1.44	1.12	.62	6.87	.62	.65	1.70	1.48	.50
20,000-25,000	8.12	4.06	1.44	1.12	.62	6.87	.84	.65	1.95	1.48	.50
30,000-75,000	10.25	5.12	1.88	2.37	.88	8.50	1.00	1.06	3.00	2.73	1.00
100,000	11.25	5.62	1.88	2.50	.88	9.50	1.00	1.06	3.50	3.24	1.00
kg/mm											
2,268.0-4,535.9	206.3	103.1	36.6	26.5	15.8	174.4	15.8	16.5	43.2	37.6	12.7
9,071.9	206.3	103.1	36.6	14.2	21.3	174.4	21.3	16.5	49.5	37.6	12.7
13,607.8-27,215.6	260.4	130.1	47.8	60.2	22.4	215.9	25.4	26.9	78.2	69.3	25.4
45,359.4	285.8	142.8	47.8	63.5	22.4	241.3	25.4	26.9	88.9	82.3	25.4

## SPECIFICATIONS

Full Scale Output: 3.0mV/V nominal  
 Bridge Resistance: 700 ohms, nominal  
 Temperature: Compensated range  
 14 deg. F to 104 deg. F  
 -10 deg. C to 40 deg. C  
 Safe Overload: 150% Full Scale  
 Rated Excitation: 10V DC (15V maximum)  
 Non-repeatability: 0.01% Full Scale

Insulation Resistance: 5000megohms  
 Cable Length: 30' / 9.2m  
 Cable Coloring: Red...+Excitation  
 Black...-Excitation  
 Green...+Signal  
 White...-Signal  
 Warranty: 1-year limited warranty  
 Combined Error: 0.025% Full Scale

# TECHWEIGH