

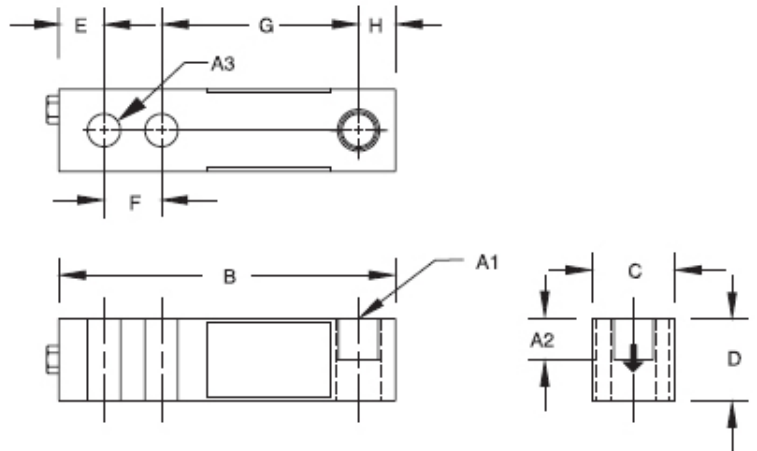
# TW40000-A/-SS

## INTERCHANGEABLE PRODUCTS:

- Rice Lake RL30000
- Rice Lake RL39123 Stainless



\*\*NTEP Approved



## DIMENSIONS

Rated Capacity	A1	A2	A3	B	C	D	E	F	G	H
lb/inches										
250-5000 SE	1/2-20 UNF-2B	.60	.53	5.12	1.25	1.25	.62	1.00	3.00	.50
5000 LE-10,000	3/4-16 UNF-2B	.75	.78	6.75	1.50	1.50	.75	1.50	3.75	.75
kg/mm										
113.4-2268 SE	1/2-20 UNF-2B	15.2	13.5	130.1	31.8	31.8	15.8	25.4	76.2	12.7
2286.0 LE-4535.9	3/4-16 UNF-2B	19.1	19.8	171.5	38.1	38.1	19.1	38.1	95.3	19.1

## SPECIFICATIONS

Full Scale Output: 3.0 mV/V  
 Bridge Resistance: 350 ohms, nominal  
 Temperature: Compensated range  
 14 deg. F to 104 deg. F  
 -10 deg. C to 40 deg. C  
 Safe Overload: 150% Full Scale  
 Rated Excitation: 10V DC (15V maximum)  
 Nonlinearity: 0.03% Full Scale

Insulation Resistance: 5000megohms  
 Cable Length: 30' / 9.2m  
 Cable Coloring: Red...+Excitation  
 Black...-Excitation  
 Green...+Signal  
 White...-Signal  
 Warranty: 1-year limited warranty  
 Hysteresis: 0.02% Full Scale