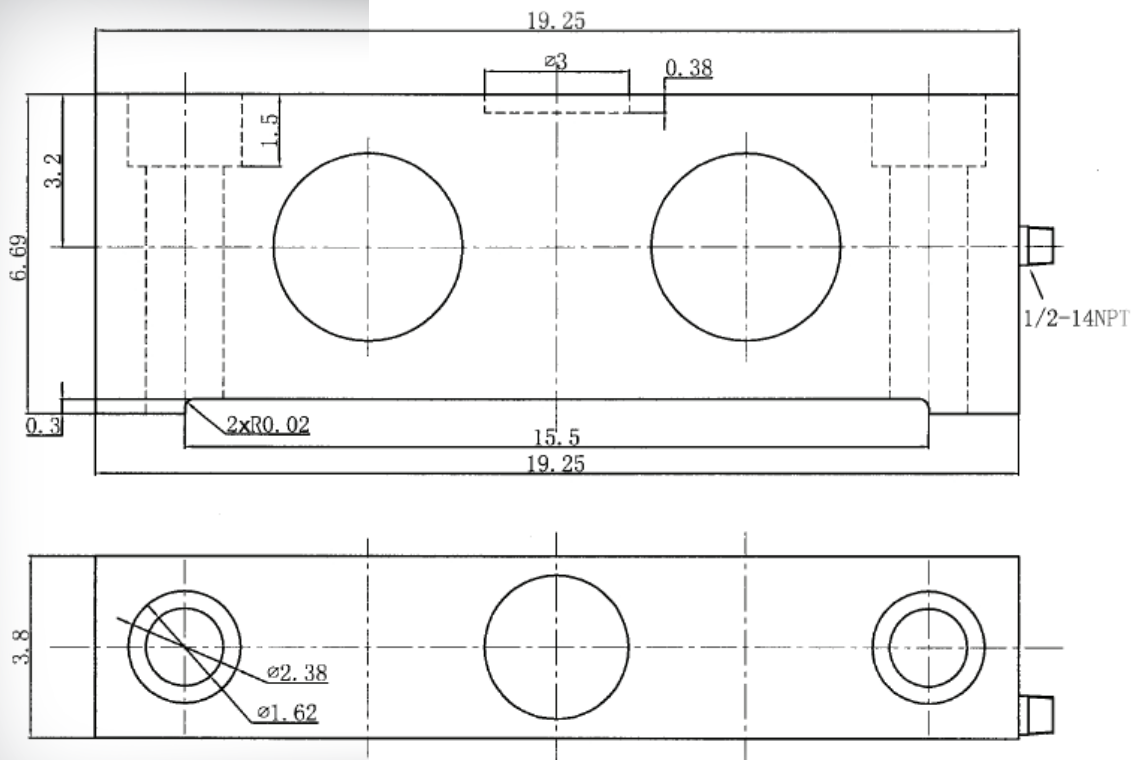


TW-DSBA

INTERCHANGEABLE PRODUCTS:

- ABB DSBA



SPECIFICATIONS

Full Scale Output: 3mv/V
Material: 4340-E Toll Steel
Safe Overload: 150%
Maximum Overload: 300%
Rated Excitation: 10V AC/DC
Combined Error: 0.10% F.S.
Non-Repeatability: 0.03% F.S.

Bridge Resistance: 700 ohms, Nominal
Standard Compensated Range: 0f to 150f
Insulation Resistance: 5000Megohms
Standard Cable Length: 25 feet
+ Excitation = Red
-Excitation = Black
+ Signal = Green
-Signal = White

TECH WEIGH