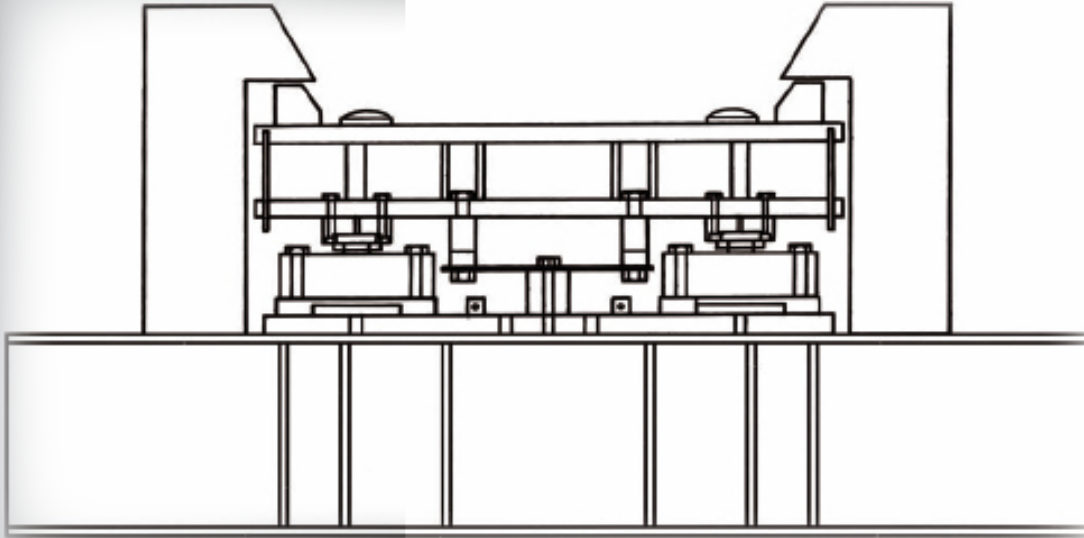


Ladle Stand Scales

Description:

The ladle/pot stand scales are designed to weigh steel ladles and slag pots. The scales utilize double-ended shear beam load cells and self-aligning bearing assemblies.



Specifications:

- Flexure plate checking system
- Floating load cell bearing assemblies
- Double-ended shear beam load cells
- Ladle/pot self aligning weighbridge
- Digital weight instrument

Options:

- R.F radio data transmission to remote locations
- Remote calibration through R.F. radios
- Scoreboards, printers, computer interfaces
- CRT touch screen digital control system
- Custom batching programs
- High temperature load cells and cable

TECH WEIGH