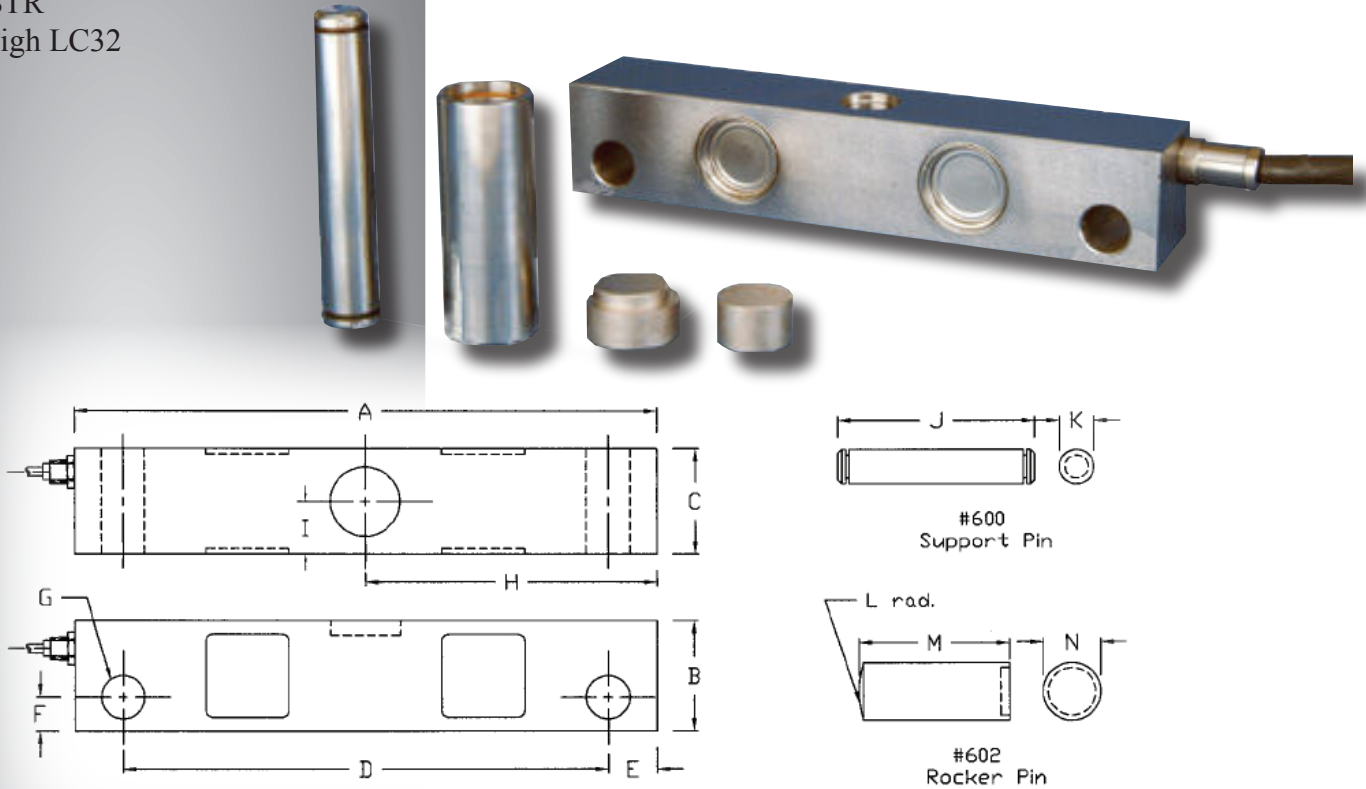


TW-STR

INTERCHANGEABLE PRODUCTS:

- Epelsa STR
- First Weigh LC32



DIMENSIONS

Rated Capacity	A	B	C	D	E	F	G	H	I
40K - 50K	10.50	2.00	1.91	8.75	0.88	0.61	0.78	5.25	0.95

SPECIFICATIONS

Full Scale Output: 3.0mV/V +/- 1%
 Temperature: Compensated range
 -14 deg. F to 104 deg. F
 -10 deg. C to 40 deg. C
 Safe Overload: 150% Full Scale

Bridge Resistance: 700 ohms
 Rated Excitation: 10-15V DC
 Zero Balance: +/- 1.00 F.S.
 Insulation Resistance: >5000megohms
 Warranty: 1-year limited warranty

TECH WEIGH