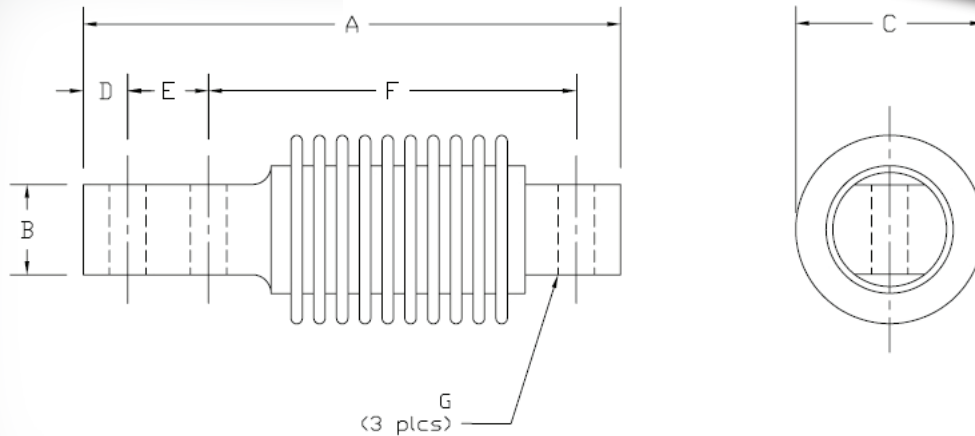
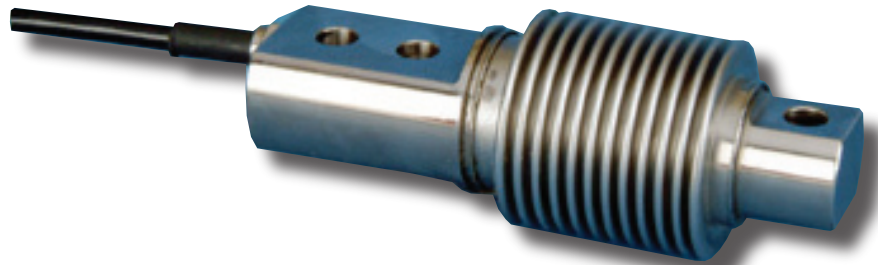


TW HBB

INTERCHANGEABLE PRODUCTS:

- Rice Lake RLHBB
- Celtron HBB
- Revere SHB
- Teda 355
- HBM Z6
- Totalcomp TZ6



DIMENSIONS

| Rated Capacity | A | B | C | D | E | F | G |
|----------------|------|------|------|------|------|------|------|
| 5 - 200KG | 4.72 | 0.79 | 1.65 | 0.39 | 0.71 | 3.23 | 0.32 |

SPECIFICATIONS

Full Scale Output: 2.0 mV/V
 Temperature: Compensated range
 -14 deg. F to 122 deg. F
 -10 deg. C to 50 deg. C
 Safe Overload: 150% Full Scale
 Rated Excitation: 10-15V DC
 Bridge Resistance: 350 ohms
 Zero Balance: +/- 1.00 F.S.

Insulation Resistance: >5000megohms
 Cable Length: 20 ft.
 Cable Coloring: Red...+Excitation
 Black...-Excitation
 Green...+Signal
 White...-Signal
 Warranty: 1-year limited warranty

TECHWEIGH