

MillMaster® DSP2000 Digital Signal Processor

MillMaster® DSP-2000... High Speed Force Measurement Systems Suitable for Inner Loop Process Control

Designed specifically to meet the demands of the Modern Rolling Mill, the Millmaster DSP-2000 delivers accurate measurement and communication at the high speed required by today's technology, and other applications that require continuous measurements.

The Millmaster DSP-2000 processes two input analog signals and supplies four analog output signals at a rate of 10,000 updates per second. Real time histograms representing up to 20 minutes of operation are displayed on the Millmaster's large graphical screen. The user friendly interface also makes setup and calibration easy.

Simple key presses navigate the operator through on screen diagnostics, allowing you to monitor the information critical to your process. View operator side, drive side, total or differential values.

The Millmaster DSP-2000 can interface with high-capacity magnetic transducers or strain gauge load cells, and is capable of single cell operation.

The Millmaster DSP-2000 can be integrated with any roll force and/or strip tension system to provide the high accuracy and reliability required by today's modern rolling mill.



TECH WEIGH

Standard Features

- Large 4.6" W x 3.4" H
- 320 x 240 pixel back-lit LCD graphical display
- Five displayed soft keys
- Front panel or serial configuration/calibration
- Operator prompts
- 24 on-board digital I/O
- Multiple screens
- Time domain up to 20 minutes
- High-speed; up to 10,000 counts per second
- Designed for simplicity and ease of use
- Capable of single cell operation
- User password protection
- Factory calibrated prior to shipping
- On screen level detection I/O and rate of rise (metal in mill) detect

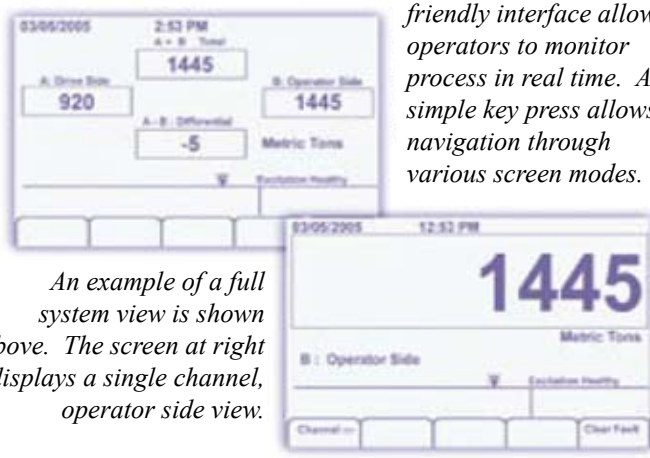
Approvals



MillMaster® DSP-2000 Universal System can be integrated with the following load cells:

- 1st Generation ABB Load Cells
- 2nd Generation ABB Load Cells
- ABB MillMate Load Cells
- All Kelk Load Cells
- MillMaster® Load Cells

The DSP-2000's user friendly interface allows operators to monitor process in real time. A simple key press allows navigation through various screen modes.



An example of a full system view is shown above. The screen at right displays a single channel, operator side view.

TECHWEIGH