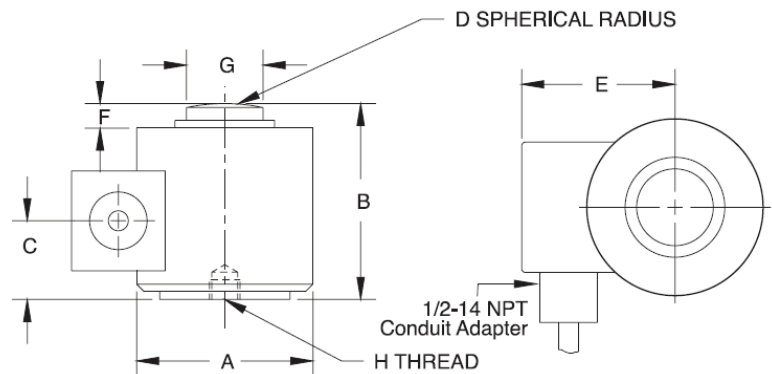


TWCSP (2.0mV/v)

INTERCHANGEABLE PRODUCTS:

- RevereCSP, CSP1, 692B
- Artech 90310
- Howe Richardson 244699-000X
- Rice Lake RLCSP1
- Sensortronics 65088-1000
- Totalcomp TCSP1



DIMENSIONS

Rated Capacity	A	B	C	D	E	F	G	H	Depth of H
lb/inches									
10,000-50,000	2.88	3.25	1.28	6.00	2.51	.40	1.25	1/2-20 UNF-2B	.38
100,000	4.12	5.00	2.15	6.00	3.39	.51	2.31	3/4-16 UNF-2B	.56
200,000-300,000	6.00	7.25	3.63	17.00	4.26	1.04	3.13	3/4-16 UNF-2B	.75
500,000	6.50	9.00	4.34	17.00	4.59	.56	3.69	3/4-16 UNF-2B	.75
kg/mm									
4535.9-22,679.6	73.2	82.6	32.5	152.4	63.8	10.2	31.8	1/2-20 UNF-2B	9.7
45,359.2	104.7	127.0	54.6	152.4	86.1	13.0	58.7	3/4-16 UNF-2B	14.2
90,718.5-136,077.7	152.4	184.2	92.2	431.8	108.2	26.4	79.5	3/4-16 UNF-2B	19.1
226,796.2	165.1	228.6	110.2	431.8	116.6	14.2	93.7	3/4-16 UNF-2B	19.1

SPECIFICATIONS

Full Scale Output: 2 mV/V
Bridge Resistance: 480 ohms, nominal
Temperature: Compensated range
 14 deg. F to 104 deg. F
 -10 deg. C to 40 deg. C
Safe Overload: 150% Full Scale
Rated Excitation: 10V DC (15V maximum)
Nonrepeatability: 0.01% Full Scale

Insulation Resistance: 5000megohms
Cable Length: 30' / 9.2m
Cable Coloring: Green...+Excitation
 Black...-Excitation
 White...+Signal
 Red...-Signal
 Orange...Shield
Warranty: 1-year limited warranty
Combined Error: 0.02% Full Scale

TECHWEIGH