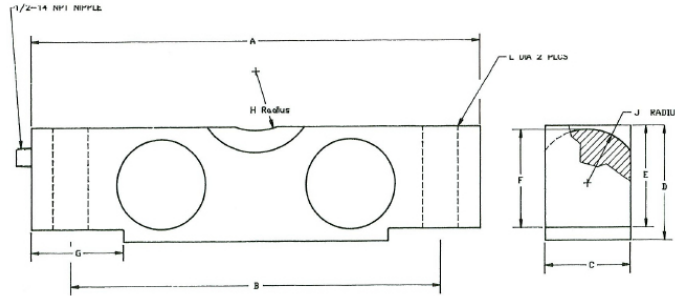


# TW85058

## INTERCHANGEABLE PRODUCTS:

- Rice Lake RL75058
- Sensortronics 65058
- Celtron CLB



## DIMENSIONS

| Rated Capacity       | A     | B     | C    | D    | E    | F    | G    | H    | J    | L    |
|----------------------|-------|-------|------|------|------|------|------|------|------|------|
| lb/inches            |       |       |      |      |      |      |      |      |      |      |
| 10,000 - 25,000      | 7.75  | 6.50  | 1.69 | 1.94 | 1.70 | 1.63 | 1.38 | .75  | .90  | .68  |
| 40,000 - 50,000 SE   | 10.25 | 8.50  | 1.94 | 2.44 | 2.10 | 2.00 | 1.93 | 1.00 | 1.12 | .81  |
| 50,000 LE - 75,000   | 10.25 | 8.50  | 2.44 | 2.94 | 2.65 | 2.54 | 1.93 | 1.00 | 1.37 | 1.06 |
| 100,000 - 125,000    | 15.25 | 12.75 | 2.90 | 3.86 | 3.43 | 3.30 | 3.13 | 1.50 | 1.80 | 1.62 |
| 200,000 - 300,000 SE | 19.25 | 15.25 | 3.80 | 5.80 | 5.12 | 4.44 | 4.00 | 2.00 | 2.37 | 1.62 |
| 300,000 LE - 400,000 | 22.00 | 17.00 | 5.80 | 5.80 | 5.12 | 4.44 | 5.00 | 2.5  | 5.00 | 2.13 |

## SPECIFICATIONS

Full Scale Output: 3.0mV/V  
 Bridge Resistance: 700 ohms, nominal  
 Material: Stainless Steel and High Alloy Steel  
 Temperature: Compensated range  
 14 deg. F to 104 deg. F  
 -10 deg. C to 40 deg. C  
 High temperature available to 400 deg. F  
 Safe Overload: 150% Full Scale  
 Rated Excitation: 10V DC (15V maximum)

Nonlinearity: 0.03% Full Scale  
 Hysteresis: 0.02% Full Scale  
 Insulation Resistance: 5000megohms  
 Cable Length: 35' / 10.6m  
 Cable Coloring: Red...+Excitation  
 Black...-Excitation  
 Green...+Signal  
 White...-Signal  
 Warranty: 1-year limited warranty

# TECHWEIGH