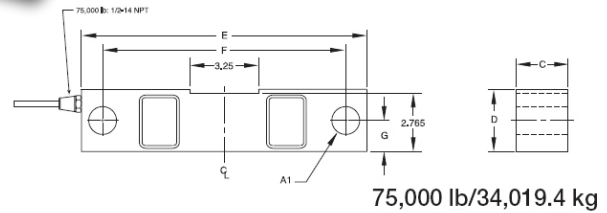
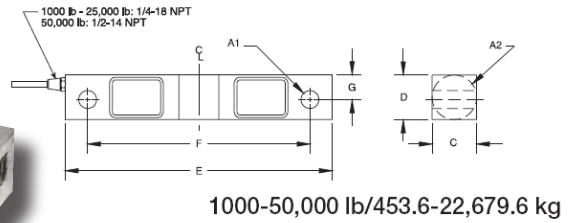
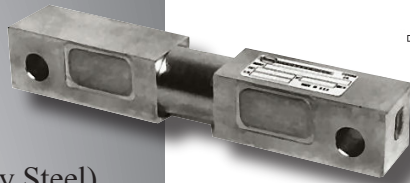


TW85016

INTERCHANGEABLE PRODUCTS:

- Sensortronics 65016
- Rice Lake RL75016
- Celtron DSR (Alloy Steel)
- Artech 70510 (Alloy Steel)
- Revere Transducers 5203 (Alloy Steel)
- Revere Transducers 9203 (Stainless Steel)
- Celtron DSR-HSS (Stainless Steel)



DIMENSIONS

Rated Capacity	A1	A2	C	D	E	F	G	Conduit Adaptor
lb/inches								
1000-5000	.50	1.25	1.25	1.25	7.50	6.25	.69	1/4-18NPT
10,000-25,000	.81	1.99	1.44	1.94	8.75	7.50	.96	1/4-18NPT
35,000	.81	2.50	1.50	2.50	8.75	7.5	-	-
50,000	1.31	3.00	2.44	2.94	13.50	11.50	1.50	1/2-14NPT
75,000	1.31	-	2.44	2.94	13.50	11.50	1.47	1/2-14NPT
kg/mm								
453.6-2268.0	12.7	31.8	31.8	31.8	190.5	158.8	17.5	1/4-18NPT
4535.9-15,876.0	20.8	50.8	36.6	49.3	222.3	190.5	24.4	1/4-18NPT
22,679.6	33.3	76.2	62.0	74.7	342.9	292.1	38.1	1/2-14NPT
34,019.4	33.3	-	62.0	74.7	342.9	292.1	37.3	1/2-14NPT

SPECIFICATIONS

Full Scale Output:	3.0mV/V nominal	Insulation Resistance:	5000megohms
Bridge Resistance:	700 ohms, nominal	Cable Length:	25' / 7.6m
Temperature:	Compensated range 0 deg. F to 150 deg. F -18 deg. C to 65 deg. C	Cable Coloring:	Red...+Excitation Black...-Excitation Green...+Signal White...-Signal
Safe Overload:	150% Full Scale	Warranty:	1-year limited warranty
Rated Excitation:	10V DC (15V maximum)	Hysteresis:	0.02% Full Scale
Nonlinearity:	0.03% Full Scale		

TECHWEIGH